



AUTOMOTIVE EDGE  
COMPUTING CONSORTIUM

February 28, 2019 @ MWC2019

# Driving Data To The Edge

**Kenichi Murata**

Toyota Motor Corporation  
and Chairman of AECC  
General Manager –  
Connected Strategy

**Christer Boberg**

Ericsson  
Director of IoT & Cloud  
Technology Strategies

**Dr. Ryutaro  
Kawamura**

NTT  
Senior Vice President and  
Director

**Joel Obstfeld**

Cisco  
Distinguished Engineer,  
Chief Technical and  
Architects Office

**Said Tabet**

Dell EMC  
Chief Architect Emerging  
Technology & Ecosystems  
Technology Lead, IoT & AI  
Strategy

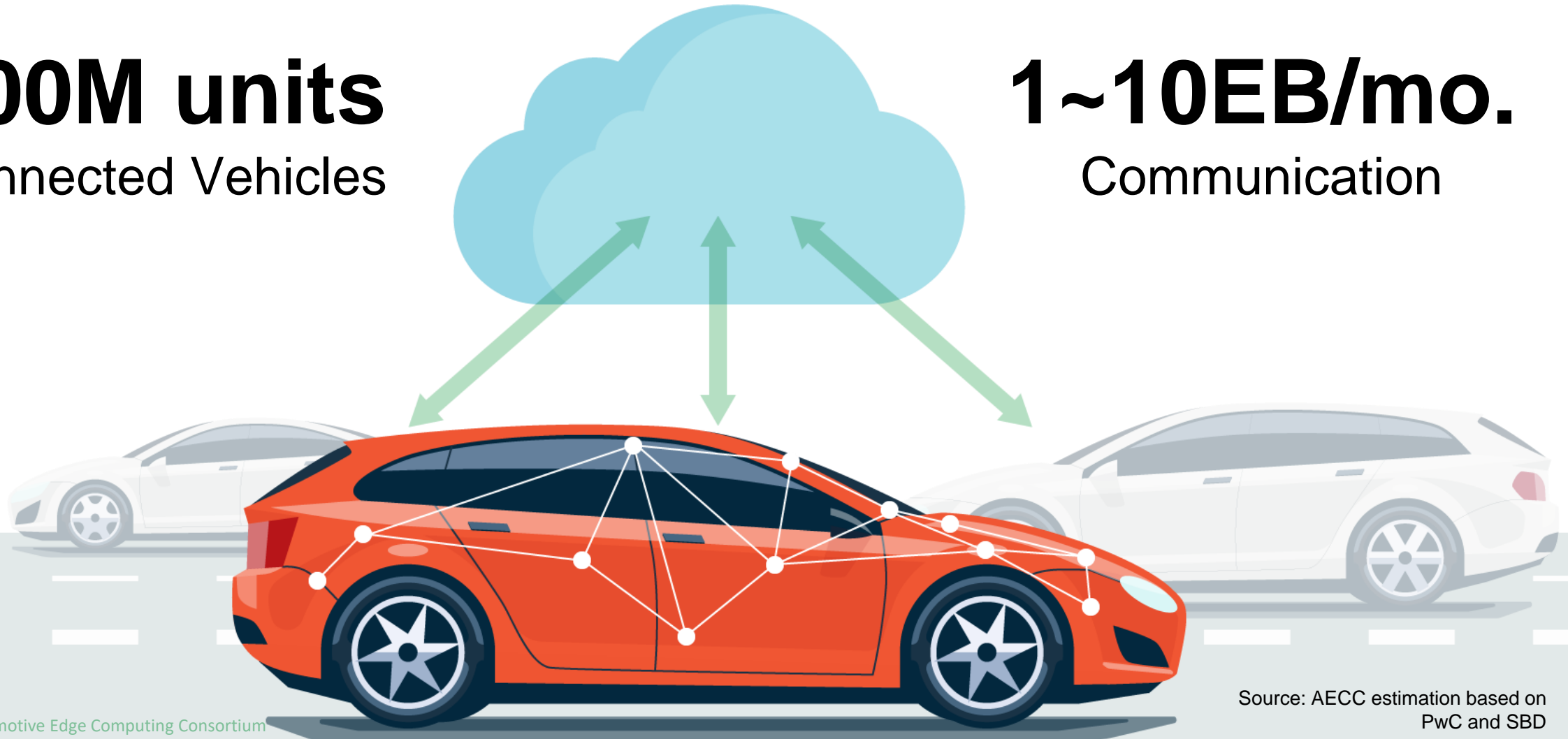




# Global Impact Around 2025

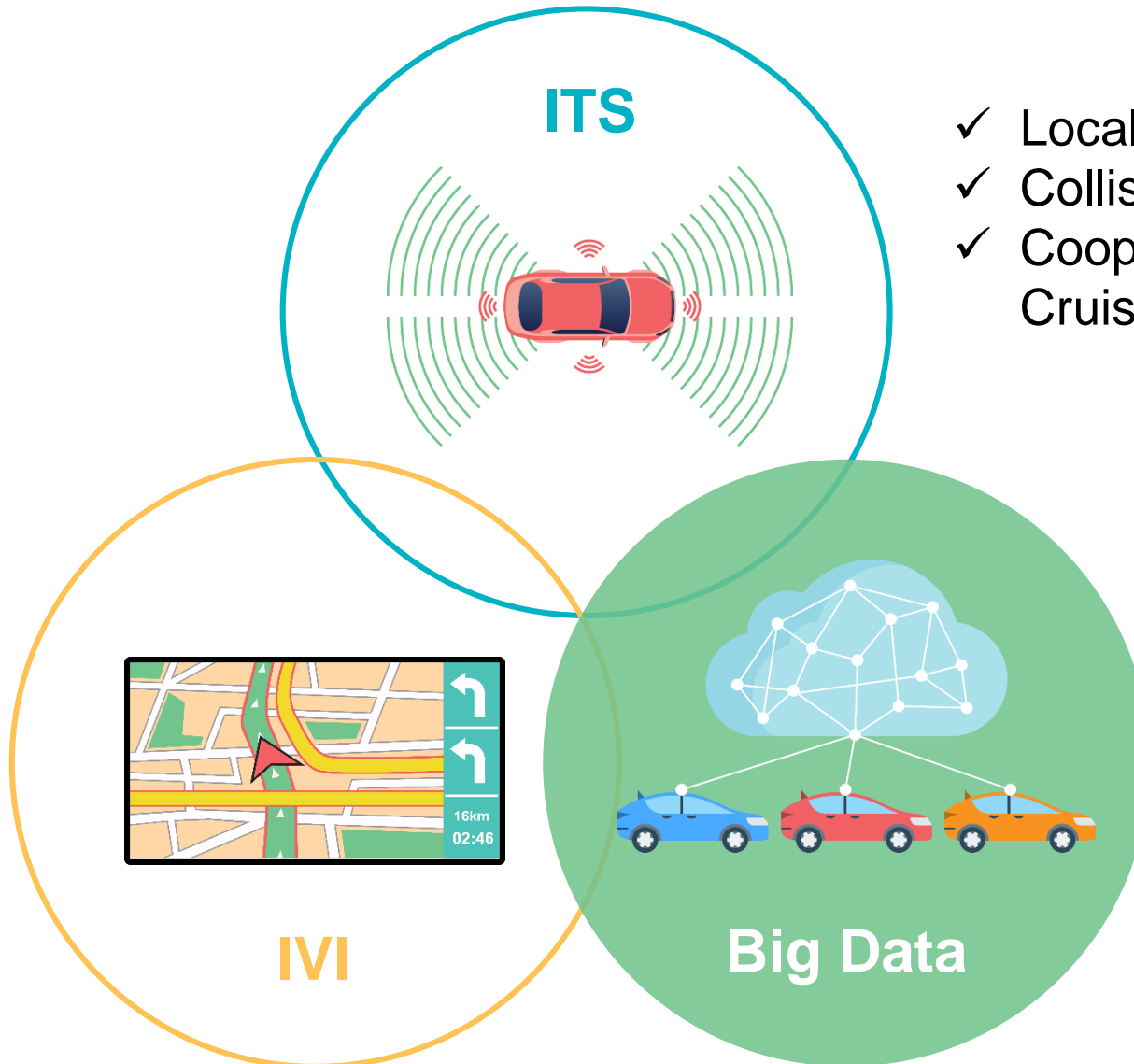
**100M units**  
Connected Vehicles

**1~10EB/mo.**  
Communication



# Domains for Connected Vehicles

- ✓ Navigation
- ✓ Audio/TV
- ✓ Phone, Internet



- ✓ Local Danger Warning
- ✓ Collision Avoidance
- ✓ Cooperative Adaptive Cruise Control

- ✓ High Definition Map
- ✓ Intelligent Driving Support
- ✓ Vehicle Quality Control
- ✓ Location Based Services

# Key Issues and Potential Solutions

## The future use cases of connected car

### Research and Development

- CAN data
- ECU data
- Driver's condition

### Advanced Driving Assistance

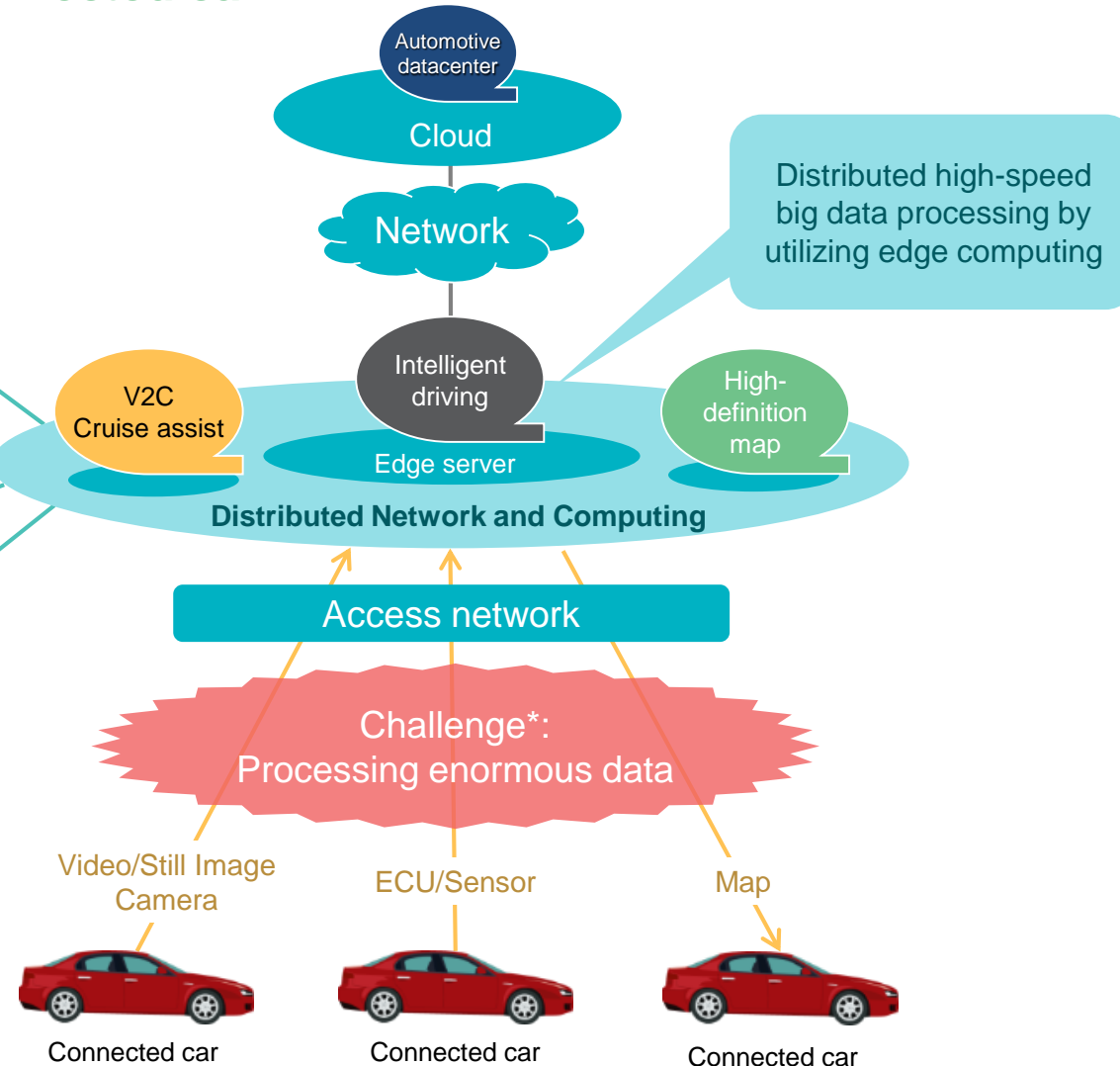
- Intelligent driving support
- High-resolution map
- Cruise assist

### Traffic

- Traffic control
- Traffic info.
- Mobility sharing
- Multimodal

### Mobility Services

Use-case realization

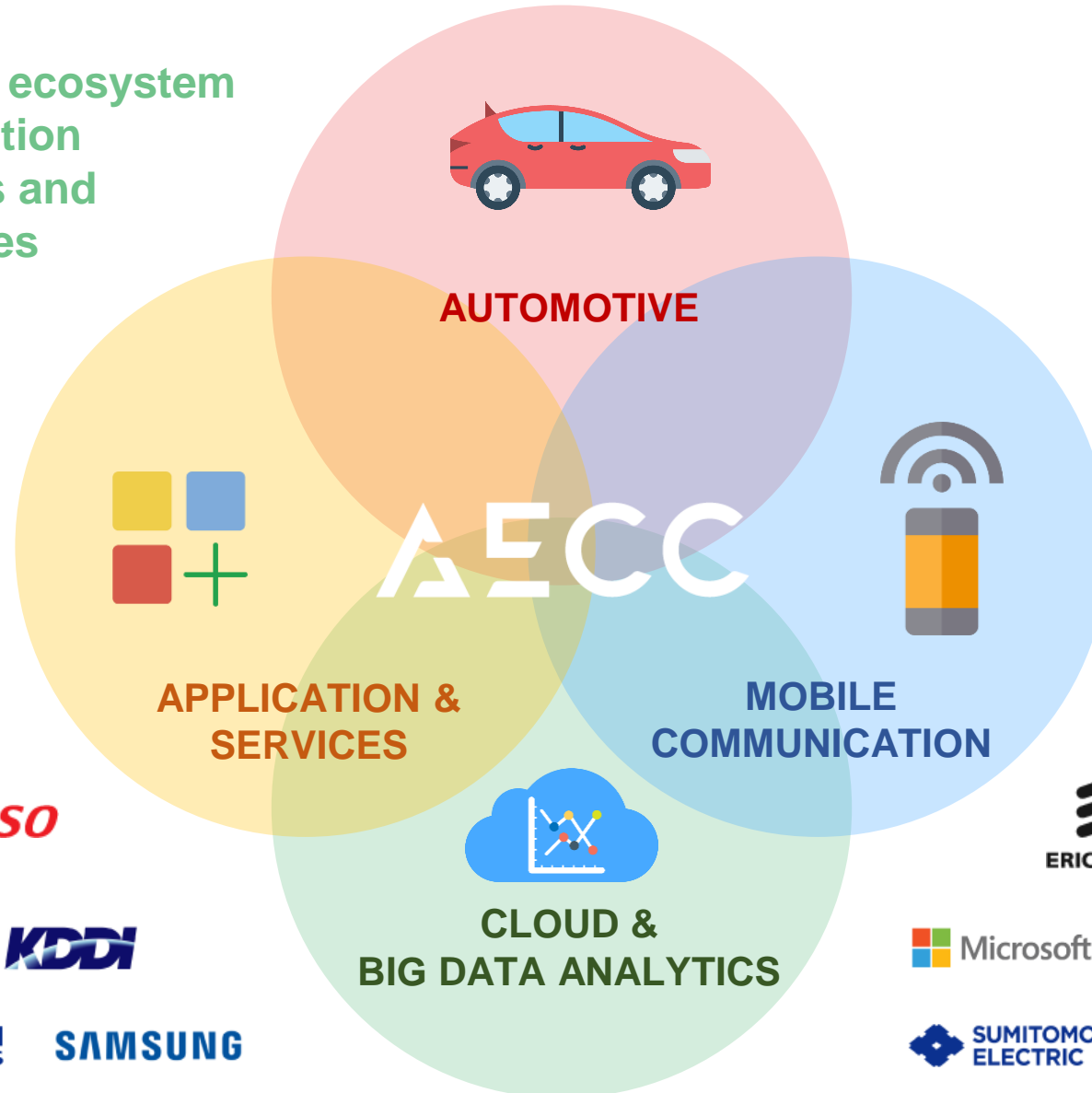




# Automotive Edge Computing Consortium

Cross-industry ecosystem  
for next generation  
connected cars and  
mobility services

Launched in  
January 2018  
as a NPO in  
the U.S.



**DENSO**



**JUNIPER**  
NETWORKS

**KDDI**

**docomo**



**Preferred Networks**

**SAMSUNG**



**FUJITSU**

**Hewlett Packard Enterprise**



**Microsoft**



**NTT Communications**  
Transform. Transcend.

**NTT DATA**

**SUMITOMO ELECTRIC**

**TOYOTA INFO TECH**  
Envisioning Mobility

**TOYOTA**

**Volterra**  
EDGE SERVICES

# AECC Principal Concept

Topology Aware Distributed Clouds Architecture



In AECC, it is called  
“Edge Computing.”

**DEVICE**



**LOCAL /  
METRO**



Antenna  
Site



Transport  
Site



Hub  
Site



Central  
Office

**COUNTRY /  
REGIONAL**



Aggregation  
Site

**GLOBAL /  
CENTRAL**



DC

**AECC's  
initial target**



# AECC Focus



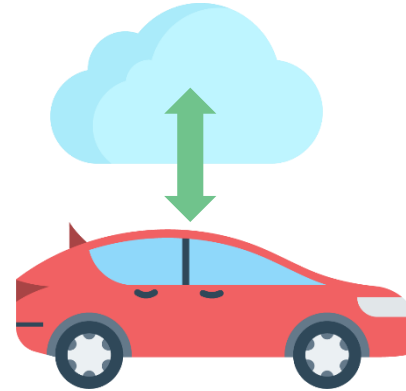
## Network/Computing for Automotive BIG DATA

To accommodate the automotive big data in a smart and efficient fashion.



## Global and Sustainable Ecosystem

The next generation connected cars will require advanced systems in order to evolve.



## Initial Focus on Vehicle to Cloud

The context is the high volume Vehicle-to-Cloud services.



## Leading Market Actors Joint Forces

Toyota, Toyota ITC, Ericsson, Intel, Denso, NTT DOCOMO, KDDI, NTT were initial members and more companies now, and more in the pipe to join.

# Recent Activities

- All Member Meetings (AMM) held 3 times in a year.
  - 23 companies participated at the last AMM in San Jose.
- Regular on-line/f2f discussions in the 2 working groups
  - WG1: Use cases & requirements, WG2: Technical solutions
- Giving external lectures, panel discussions

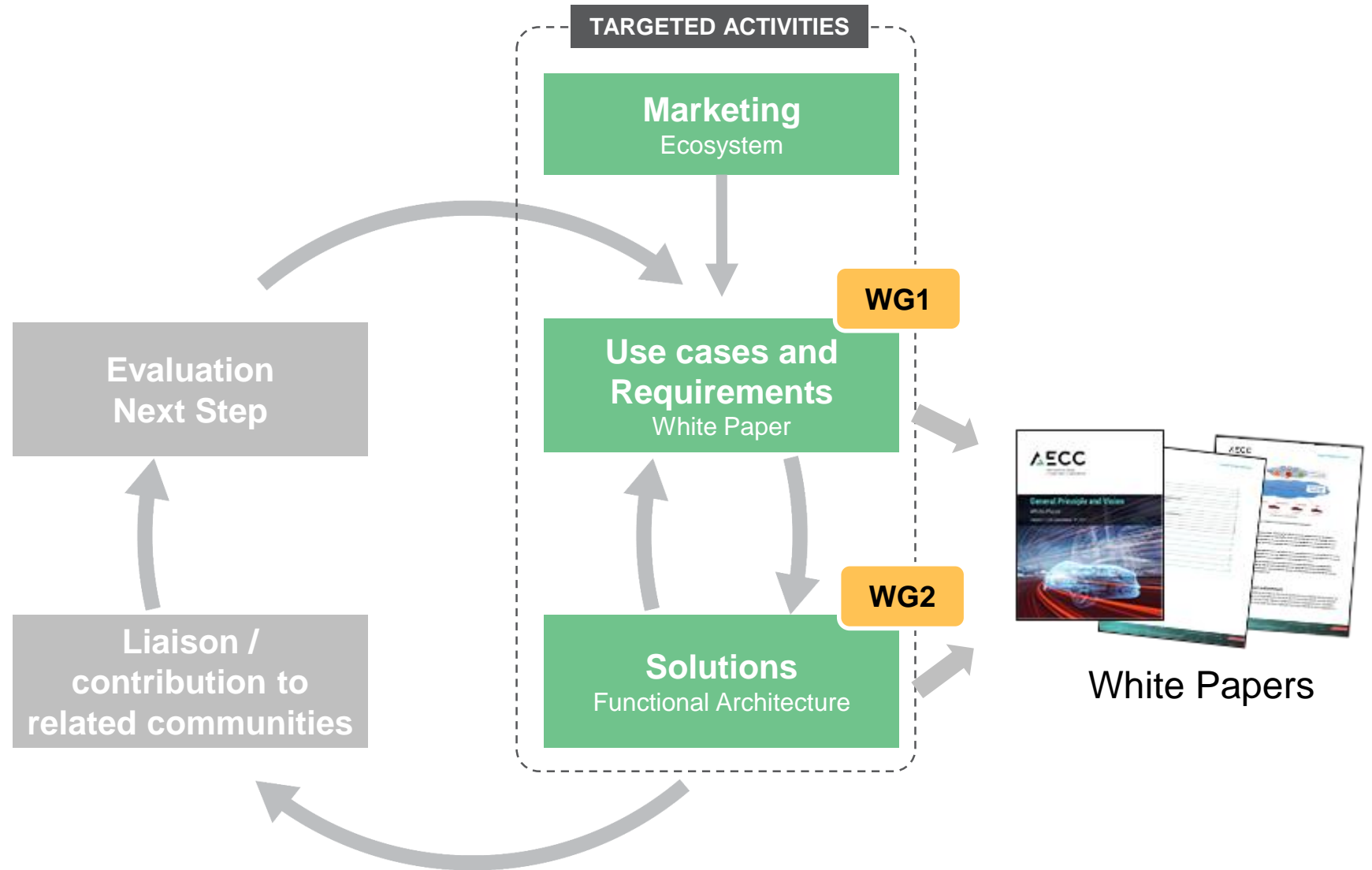




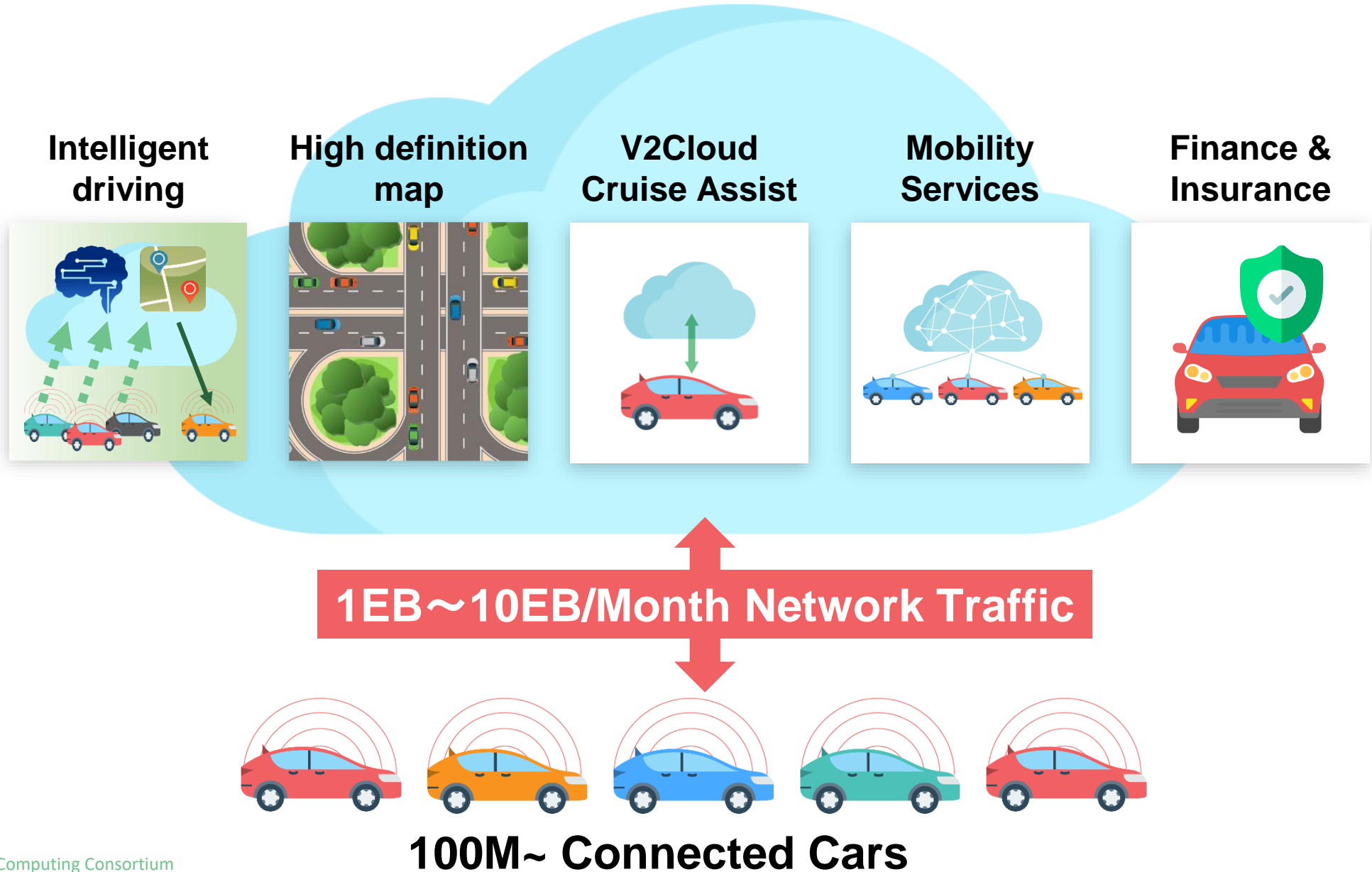


# AECC Workflow

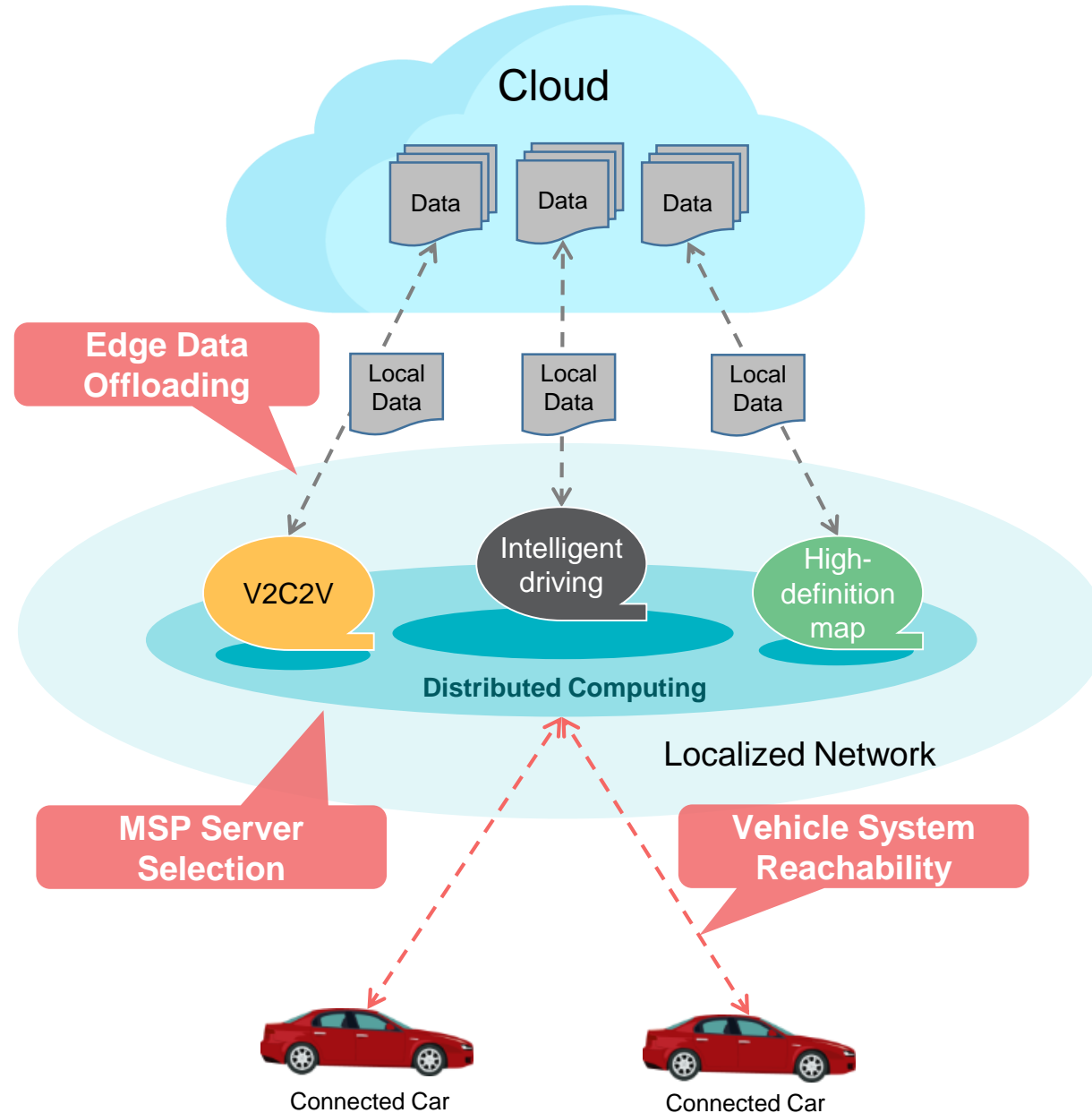
## RELEVANT COMMUNITIES



# WG1: Use-cases



# WG2: Key Issues





# Thank you for your attention

Let's Get Connected!





AUTOMOTIVE EDGE  
COMPUTING CONSORTIUM

February 28, 2019 @ MWC2019

# Panel Discussion and Q & A

**Kenichi Murata**

Toyota Motor Corporation  
and Chairman of AECC  
General Manager –  
Connected Strategy

**Christer Boberg**

Ericsson  
Director of IoT & Cloud  
Technology Strategies

**Dr. Ryutaro  
Kawamura**

NTT  
Senior Vice President and  
Director

**Joel Obstfeld**

Cisco  
Distinguished Engineer,  
Chief Technical and  
Architects Office

**Said Tabet**

Dell EMC  
Chief Architect Emerging  
Technology & Ecosystems  
Technology Lead, IoT & AI  
Strategy



# AECC Website

<https://aecc.org>

Download our **White Paper**

## Sign-up Process:

1. Inquiry
2. Approval
3. Membership package
4. Membership Agreement (MA) signed
5. MA countersigned (by AECC)
6. Welcome email with invoice
7. Payment

